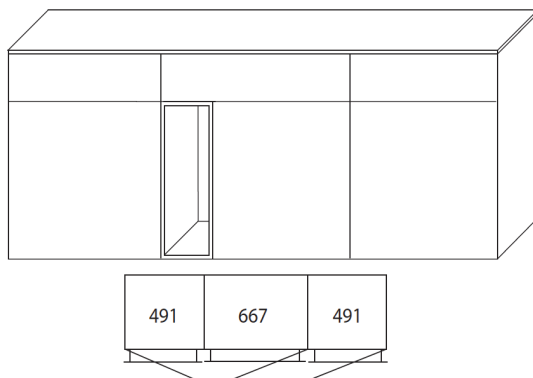


## Madia SETAPLUS SA1612 di Maronese Acf



**Madia 3 ante + 3 cassetti + 1 vano a giorno**  
L 1762 x H 716 x P 492 mm

### Tipologie di maniglie compatibili:

Di serie:

Apertura  
Push-Pull

Senza  
maniglie

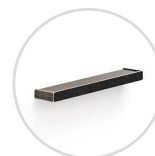
Optional:



**TIPO B**  
L 158 x H 30 mm  
Finitura manganese e colori  
laccati opachi  
Interasse fori 128 mm



**TIPO C**  
H 80 x P 22 mm  
Finitura champagne / manganese /  
spazzolato brilli inox  
Interasse fori 70 mm



**TIPO F**  
L 35 x H 45 mm  
Finitura argento anticato e  
colori laccati opachi  
Interasse fori 64 mm



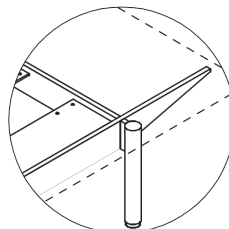
**TIPO G**  
L 35 x H 45 mm  
Finitura manganese + nichel  
Foro centrale

### Tipologie di basamento compatibili:

#### Tipo "A"

H 176 x P 338 mm  
Basamento in metallo

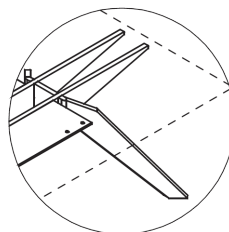
- Finitura nero opaco
- Regolabili in altezza



#### Tipo "B"

H 176 x P 338 mm  
Basamento in metallo

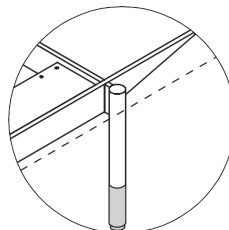
- Finitura nero opaco



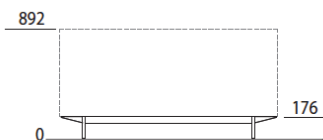
#### Tipo "D"

H 246 x P 338 mm  
Basamento in metallo

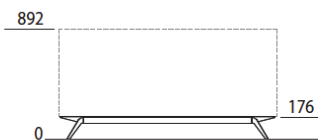
- Finitura nero opaco
  - Regolabili in altezza
  - Puntale in metallo di serie in finitura nero opaco.
- A richiesta senza sovrapprezzo, puntale disponibile nelle finiture metallizzate:  
Bronzo - Ottone - Nichel - Ferro - Manganese



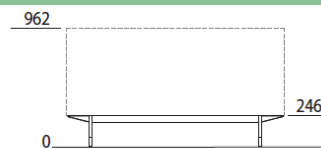
### Altezza totale madia con basamento:



**Basamento tipo A**  
Base type A



**Basamento tipo B**  
Base type B



**Basamento tipo D**  
Base type D