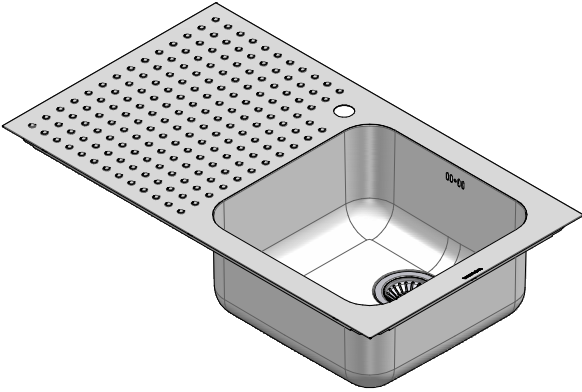


## 1IS9060/1S

**DESCRIZIONE** Lavello SELECT incasso 86x50 - 1 vasca + piano d'appoggio  
**DESCRIPTION** 86x50 cm SELECT built-in sink - 1 bowl + supporting surface

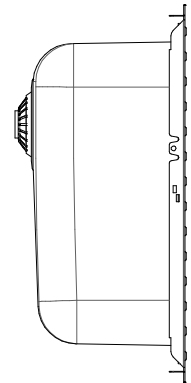
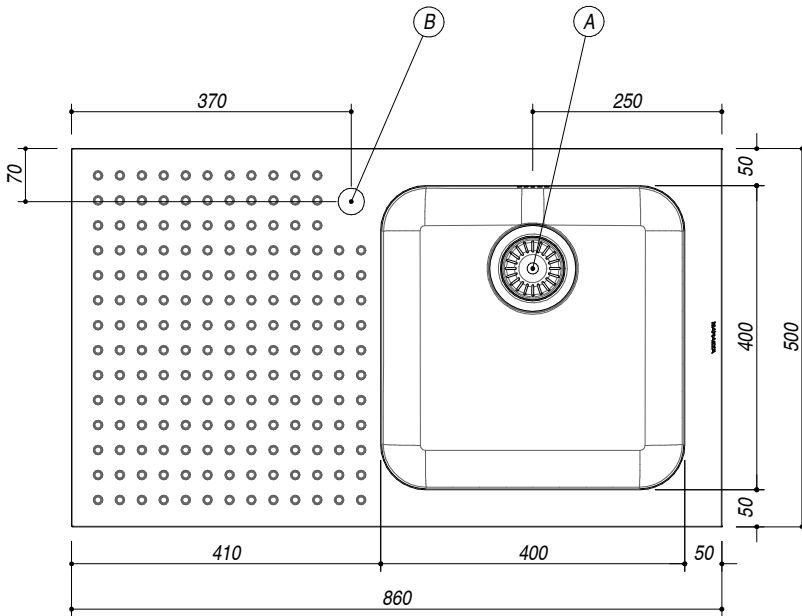
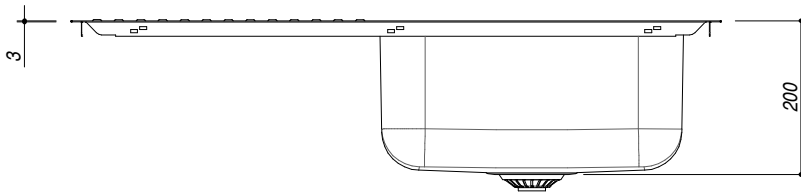
**PESO LORDO** 7.1 kg  
**GROSS WEIGHT**

**DIMENSIONI IMBALLO** 910x530x220 mm  
**PACKAGING DIMENSIONS**



**ACCIAIO INOX** piano d'appoggio sx  
**Stainless steel** left side supporting surface

- Acciaio Inox AISI 304 (Thick stainless steel AISI 304)
- Dimensioni vasche: 40x40x20 h cm (Bowls dimensions: 40x40x20 h cm)
- Dotazioni: pilettona 3"1/2, foro troppo-pieno, (A)
- (Equipment: 3"1/2 basket strainer waste, overflow)
- Foro rubinetto: 1 foro di serie, (Tap Hole: 1 series hole) (B)
- Base inserimento vasca: 60 (Base unit for bowl: 60)
- Incasso: 84x48 cm (built-in: 84x48 cm)



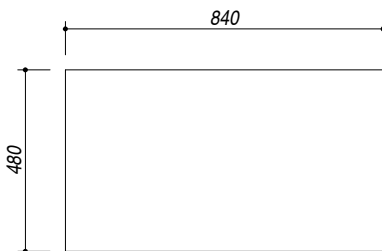
**SCALA DISEGNO** 1:10  
**DRAWING SCALE**

**TUTTE LE MISURE IN mm**  
**ALL MEASURES IN mm**

**TOLLERANZA LINEARE:** ± 0.5 mm  
**LINEAR TOLERANCE**

**TOLLERANZA ANGOLARE:** ± 0.2 °  
**ANGULAR TOLERANCE**

**FORATURA PER INSTALLAZIONE AD INCASSO**  
**BUILT-IN CUTOUT FOR TOP**



1:20